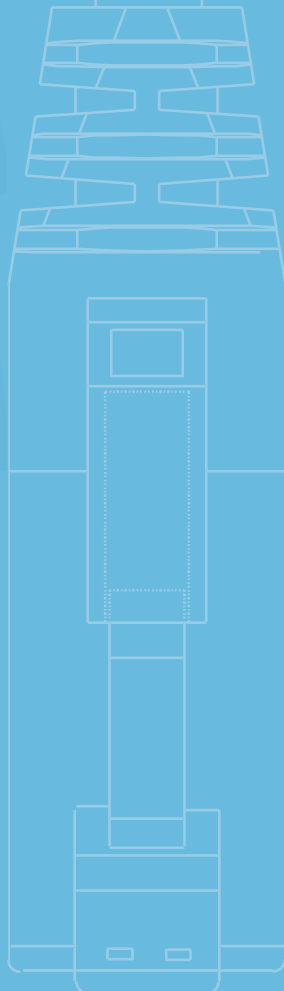
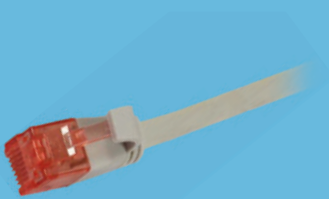




PATCH CABLE RJ45 and FIBRE OPTICS



PATCH CABLE RJ45, CAT5E, 100 MHZ

- AWG26
- F/UTP
- Foil shielded
- Round cable d=5,2mm

- PVC
- RJ45 Plug
- Plug with latching nose protection
- Patch cable in Synergy 21 blister packaging



Length	● Blue	● Yellow	● Grey	● Green	● Red	● Black
0,25 m	S215001	S215002	S215003	S215004	S215005	S215006
0,5 m	S215007	S215009	S215010	S215011	S215012	S215013
1 m	S215014	S215016	S215017	S215018	S215019	S215020
1,5 m	S215021	S215022	S215023	S215024	S215025	S215026
2 m	S215027	S215029	S215030	S215031	S215032	S215033
3 m	S215034	S215036	S215037	S215038	S215039	S215040
5 m	S215041	S215043	S215044	S215045	S215046	S215047
7,5 m	S215048	S215049	S215050	S215051	S215052	S215053
10 m	S215054	S215056	S215057	-	S215059	-
15 m	-	-	-	-	S215065	-
25 m	S215074	S215075	-	S215077	S215078	-
30 m	-	-	-	S215083	-	-

- AWG26
- SF/UTP
- Braided and foil shielded
- Round cable d=5,7mm

- PVC
- RJ45 Plug
- Plug with latching nose protection
- Patch cable in Synergy 21 blister packaging



Length	● Blue	● Yellow	● Grey	● Green	● Red	● Black
0,25 m	S215098	S215099	S215100	S215101	S215102	S215103
0,5 m	S215104	S215106	S215107	S215108	S215109	S215110
1 m	S215111	S215113	S215114	S215115	S215116	S215117
1,5 m	S215118	S215119	S215120	S215121	S215122	S215123
2 m	S215124	S215126	S215127	S215128	S215129	S215130
3 m	S215131	S215133	S215134	S215135	S215136	S215137
5 m	S215138	S215140	S215141	S215142	S215143	S215144
7,5 m	S215145	S215147	S215148	S215149	S215150	S215151
10 m	S215152	S215154	S215155	S215156	S215157	S215158
15 m	S215161	-	S215162	-	-	-
20 m	-	-	S215169	-	-	-
25 m	-	S215174	S215175	S215176	S215177	S215178
30 m	-	-	S215181	-	-	-
40 m	-	-	S215198	-	-	-
50 m	-	-	S215199	-	-	-

PATCH CABLE RJ45, CAT6, 250 MHZ

- AWG27
- S/FTP
- Braid/wire pairs foil shielded
- Round cable d=5,8mm
- Halogen-free
- RJ45 Plug
- Plug with latching nose protection
- Patch cable in Synergy 21 blister packaging
- Flame retardant IEC60332-1



Length	● Blue	● Yellow	● Grey	● Green	● Magenta	● Orange	● Red	● Black	○ White
0,15 m	S215900	S215901	S215902	S215903	S215904	S215905	S215906	S215907	S215908
0,25 m	S216002	S216003	S216004	S216005	S216010	S216006	S216007	S216001	S216135
0,5 m	S216009	S216011	S216012	S216013	S216014	S216015	S216016	S216008	S216017
1 m	S216019	S216020	S216022	S216023	S216024	S216025	S216026	S216018	S216027
1,5 m	S216029	S216030	S216031	S216032	S216033	S216034	S216035	S216028	S216036
2 m	S216038	S216039	S216041	S216042	S216043	S216044	S216045	S216037	S216046
3 m	S216048	S216049	S216051	S216052	S216053	S216054	S216055	S216047	S216056
5 m	S216058	S216059	S216061	S216062	S216063	S216064	S216065	S216057	S216066
7,5 m	S216068	S216069	S216070	S216071	S216072	S216073	S216074	S216067	S216075
10 m	S216077	S216078	S216079	S216080	S216081	S216082	S216083	S216076	S216084
15 m	S216086	S216087	S216088	S216089	S216090	S216091	S216092	S216085	S216093
20 m	S216095	S216096	S216097	S216098	S216099	S216100	S216101	S216094	S216102
25 m	S216104	S216105	S216106	S216107	S216108	S216109	S216110	S216103	S216111
30 m	S216113	S216114	S216115	S216116	S216117	S216118	S216119	S216112	S216120
40 m	-	-	S216133	-	-	-	-	-	-
50 m	-	-	S216134	-	-	-	-	-	-

- AWG27
- S/FTP
- TPE (Non fire retardant) Superflex
- Round cable d=5,8mm
- Braid/wire pairs foil shielded
- Halogen-free
- RJ45 Plug
- Plug with latching nose protection
- Patch cable in Synergy 21 blister packaging



Length	● Blue	● Yellow	● Grey	● Green	● Magenta	● Orange	● Black	○ White
0,15 m	S216943	S216954	S216932	S216965	S216987	S216976	S216931	S216930
0,25 m	S216944	S216955	S216933	S216966	S216988	S216977	S216915	S216900
0,5 m	S216945	S216956	S216934	S216967	S216989	S216978	S216916	S216901
1 m	S216946	S216957	S216935	S216968	S216990	S216979	S216917	S216902
1,5 m	S216947	S216958	S216936	S216969	S216991	S216980	S216918	S216903
2 m	S216948	S216959	S216937	S216970	S216992	S216981	S216919	S216904
3 m	S216949	S216960	S216938	S216971	S216993	S216982	S216920	S216905
5 m	S216950	S216961	S216939	S216972	S216994	S216983	S216921	S216906
7,5 m	S216951	S216962	S216940	S216973	S216995	S216984	S216922	S216907
10 m	S216952	S216963	S216941	S216974	S216996	S216985	S216923	S216908
15 m	S216953	S216964	S216942	S216975	S216997	S216986	S216924	S216909

PATCH CABLE RJ45, CAT6, 250 MHZ

- AWG32
- U/UTP
- Unshielded
- Flat cable h=2mm b=6mm
- PVC
- RJ45 Plug
- Plug with latching nose protection
- Patch cable in Synergy 21 blister packaging



Length	● Grey	● Black	○ White
0,15 m	S216159V2	S216179V2	S216169V2
0,25 m	S216160V2	S216180V2	S216170V2
0,5 m	S216161V2	S216181V2	S216171V2
1 m	S216162V2	S216182V2	S216172V2
2 m	S216163V2	S216183V2	S216173V2
3 m	S216164V2	S216184V2	S216174V2
5 m	S216165V2	S216185V2	S216175V2
7,5 m	S216166V2	S216186V2	S216176V2
10 m	S216167V2	S216187V2	S216177V2

- AWG32
- U/FTP
- Wire pair foil shielded
- Round, thin cable d=3,6mm
- Halogen-free
- RJ45 Plug
- Plug with latching nose protection
- Patch cable in Synergy 21 blister packaging
- Flame retardant IEC60332-1



Length	● Black	○ White
0,15 m	S217270	S217280
0,25 m	S217271	S217281
0,5 m	S217272	S217282
1 m	S217273	S217283
1,5 m	S217274	S217284
2 m	S217275	S217285
3 m	S217276	S217286
5 m	S217277	S217287
7,5 m	S217278	S217288
10 m	S217279	S217289

- AWG26
- U/UTP
- unshielded
- Round cable d=6mm
- PVC
- RJ45 Plug
- Plug with latching nose protection
- Patch cable in Synergy 21 blister packaging



	0,25 m	0,5 m	1 m	1,5 m	2 m	3 m
● Grey	S216121	S216122	S216123	S216124	S216125	S216126
	5 m	7,5 m	10 m	15 m	20 m	30 m
● Grey	S216127	S216128	S216129	S216130	S216131	S216132

PATCH CABLE RJ45, CAT6A, 500 MHZ

- AWG26
- S/FTP
- Braid/wire pairs foil shielded
- Round cable d=6mm
- Halogen-free
- RJ45 Plug
- Plug with latching nose protection
- Patch cable in Synergy 21 blister packaging
- Flame retardant IEC60332-1
- Test report per cable



Length	● Blue	● Yellow	● Grey	● Green	● Orange	● Red	● Black	● White
0,15 m	S216393	S216391	S216390	S216392	S216520	S216394	S216396	S216395
0,25 m	S216445	S216415	S216400	S216430	S216505	S216460	S216490	S216475
0,5 m	S216446	S216416	S216401	S216431	S216506	S216461	S216491	S216476
1 m	S216447	S216417	S216402	S216432	S216507	S216462	S216492	S216477
1,5 m	S216448	S216418	S216403	S216433	S216508	S216463	S216493	S216478
2 m	S216449	S216419	S216404	S216434	S216509	S216464	S216494	S216479
3 m	S216450	S216420	S216405	S216435	S216510	S216465	S216495	S216480
5 m	S216451	S216421	S216406	S216436	S216511	S216466	S216496	S216481
7,5 m	S216452	S216422	S216407	S216437	S216512	S216467	S216497	S216482
10 m	S216453	S216423	S216408	S216438	S216513	S216468	S216498	S216483
15 m	S216454	S216424	S216409	S216439	S216514	S216469	S216499	S216484
20 m	S216455	S216425	S216410	S216440	S216515	S216470	S216500	S216485
25 m	S216456	S216426	S216411	S216441	S216516	S216471	S216501	S216486
30 m	S216457	S216427	S216412	S216442	S216517	S216472	S216502	S216487
40 m	S216458	S216428	S216413	S216443	S216518	S216473	S216503	S216488
50 m	S216459	S216429	S216414	S216444	S216519	S216474	S216504	S216489

- AWG26
- S/FTP
- TPE (Non fire retardant) Superflex
- Braid/wire pairs foil shielded
- Round cable d=6mm
- RJ45 Plug
- Plug with latching nose protection
- Patch cable in Synergy 21 blister packaging
- Test report per cable
- Halogen-free



Length	● Blue	● Yellow	● Grey	● Green	● Orange	● Black	● White
0,15 m	S217221	S217232	S217210	S217243	S217254	S216829	S216797
0,25 m	S217222	S217233	S217211	S217244	S217255	S216810	S216800
0,5 m	S217223	S217234	S217212	S217245	S217256	S216811	S216801
1 m	S217224	S217235	S217213	S217246	S217257	S216812	S216802
1,5 m	S217225	S217236	S217214	S217247	S217258	S216813	S216803
2 m	S217226	S217237	S217215	S217248	S217259	S216814	S216804
3 m	S217227	S217238	S217216	S217249	S217260	S216815	S216805
5 m	S217228	S217239	S217217	S217250	S217261	S216816	S216806
7,5 m	S217229	S217240	S217218	S217251	S217262	S216817	S216807
10 m	S217230	S217241	S217219	S217252	S217263	S216818	S216808
15 m	S217231	S217242	S217220	S217253	S217264	S216819	S216809

PATCH CABLE RJ45, CAT6A, 500 MHZ

- AWG27
- S/FTP
- Braid/wire pairs foil shielded
- Round cable d=5,8mm
- Halogen-free
- RJ45 Plug
- Plug with latching nose protection
- Patch cable in Synergy 21 blister packaging
- Flame retardant IEC60332-1
- Test report per cable



Length	● Blue	● Yellow	● Grey	● Green	● Orange	● Red	● Black	○ White
0,25 m	S216610	S216620	S216600	S216630	S216640	S216650	S216660	S216670
0,5 m	S216611	S216621	S216601	S216631	S216641	S216651	S216661	S216671
1 m	S216612	S216622	S216602	S216632	S216642	S216652	S216662	S216672
1,5 m	S216613	S216623	S216603	S216633	S216643	S216653	S216663	S216673
2 m	S216614	S216624	S216604	S216634	S216644	S216654	S216664	S216674
3 m	S216615	S216625	S216605	S216635	S216645	S216655	S216665	S216675
5 m	S216616	S216626	S216606	S216636	S216646	S216656	S216666	S216676
7,5 m	S216617	S216627	S216607	S216637	S216647	S216657	S216667	S216677
10 m	S216618	S216628	S216608	S216638	S216648	S216658	S216668	S216678
15 m	S216619	S216629	S216609	S216639	S216649	S216659	S216669	S216679

- AWG26
- S/FTP
- Braid/wire pairs foil shielded
- Round cable d=6mm
- Halogen-free
- RJ45 Plug
- Plug with latching nose protection
- Patch cable in Synergy 21 blister packaging
- Flame retardant IEC60332-1
- Test report per cable
- Component tested



Length	● Blue	● Yellow	● Grey	● Green	● Orange	● Pink	● Red	● Black	○ White
0,5 m	S217133	S217188	S217111	S217177	S217155	S217166	S217199	S217122	S217144
1 m	S217134	S217189	S217112	S217178	S217156	S217167	S217200	S217123	S217145
1,5 m	S217135	S217190	S217113	S217179	S217157	S217168	S217201	S217124	S217146
2 m	S217136	S217191	S217114	S217180	S217158	S217169	S217202	S217125	S217147
3 m	S217137	S217192	S217115	S217181	S217159	S217170	S217203	S217126	S217148
5 m	S217138	S217193	S217116	S217182	S217160	S217171	S217204	S217127	S217149
7,5 m	S217139	S217194	S217117	S217183	S217161	S217172	S217205	S217128	S217150
10 m	S217140	S217195	S217118	S217184	S217162	S217173	S217206	S217129	S217151
15 m	S217141	S217196	S217119	S217185	S217163	S217174	S217207	S217130	S217152
20 m	S217142	S217197	S217120	S217186	S217164	S217175	S217208	S217131	S217153

PATCH CABLE RJ45, CAT6A, 500 MHZ

- AWG32
- U/FTP
- Flat cable h=2mm b=6,5mm
- Wire pairs foil shielded
- PVC
- RJ45 Plug
- Plug with latching nose protection
- Patch cable in Synergy 21 blister packaging



Length	● Grey	● Black	○ White
0,15 m	S216861	S216850	S216872
0,25 m	S216862	S216851	S216873
0,5 m	S216863	S216852	S216874
1 m	S216864	S216853	S216875
1,5 m	S216865	S216854	S216876
2 m	S216866	S216855	S216877
3 m	S216867	S216856	S216878
5 m	S216868	S216857	S216879
7 m	S216869	-	S216880
10 m	S216870	S216859	S216881
15 m	S216871	S216860	S216882

- AWG26
- S/FTP
- PUR Outer sheath resistant to mineral oil and UV radiation
- Braid/wire pairs foil shielded
- Round cable d=6mm
- Halogen-free
- RJ45 Plug
- Plug with latching nose protection
- Patch cable in Synergy 21 blister packaging
- Test report per cable



Length	● Black
0,25 m	S216830
0,5 m	S216831
1 m	S216832
1,5 m	S216833
2 m	S216834
3 m	S216835
5 m	S216836
7,5 m	S216837
10 m	S216838
15 m	S216839
20 m	S216840
25 m	S216841
30 m	S216842
40 m	S216843
50 m	S216844

PATCH CABLE 2-FIBER-OPTIC CABLE, 2 MM

- Halogen-free
- Inside cable duplex
- UPC - straight grind

	LC-LC 9/125um OS2	LC-LC 50/125um OM2	LC-LC 50/125um OM3	LC-LC 50/125um OM4	LC-LC 50/125um OM5	LC-SC 9/125um OS2
0,5 m	S216746	S216779	S216736	S216762	S215494	S216780
1 m	S216747	S216719	S216737	S216763	S215495	S216781
1,5 m	S216748	S216720	S216738	S216764	S215496	S216782
2 m	S216749	S216721	S216739	S216765	S215497	S216783
3 m	S216750	S216722	S216740	S216766	S215498	S216784
5 m	S216751	S216723	S216741	S216767	S215499	-
7,5 m	S216752	S216724	S216742	S216768	S215500	-
10 m	S216753	S216725	S216743	S216769	S215501	-
15 m	-	-	S216744	S216770	S215502	-
20 m	-	-	S216745	S216771	S215503	-
30 m	-	-	-	-	S215505	-
40 m	-	-	-	-	S215506	-
50 m	-	-	-	-	S215507	-

	LC-SC 50/125um OM2	LC-SC 50/125um OM3	LC-SC 50/125um OM4	LC-LC 9/125um OS2 Uniboot	LC-LC 50/125um OM3 Uniboot	LC-LC 50/125um OM4 Uniboot
0,5 m	S216728	S216754	S216778	S215525	S215540	S215550
1 m	S216729	S216755	S216772	S215526	S215541	S215551
1,5 m	S216730	S216756	S216773	S215527	S215542	S215552
2 m	S216731	S216757	S216774	S215528	S215543	S215553
3 m	S216732	S216758	S216775	S215529	S215544	S215554
5 m	-	S216759	S216776	S215530	S215545	S215555
7,5 m	-	-	-	S215531	S215546	S215556
10 m	-	S216760	-	S215532	S215547	S215557
15 m	-	S216761	-	S215533	S215548	S215558
20 m	-	-	-	S215534	S215549	S215559



LC-Plug



SC-Plug



ST-Plug



LSH-Plug



Uniboot-Plug

PATCH CABLE 2-FIBER-OPTIC CABLE, 3 MM

- Halogen-free
- Inside cable duplex
- UPC

Length	LC-LSH 9/125um OS2	LC-LC 9/125um OS2	LC-LC 50/125um OM3	LC-LC 50/125um OM4	LC-SC 50/125um OM2
0,5 m	S215511	S216247	S216223	S216268	S216209
1 m	S215512	S216250	S216224	S216269	S216210
1,5 m	S215513	-	-	-	-
2 m	S215514	S216253	S216225	S216270	S216211
3 m	S215515	S216256	S216226	S216271	S216212
5 m	S215516	S216259	S216227	S216272	S216213
7,5 m	S215517	S216261	S216228	S216273	S216214
10 m	S215518	S216262	S216229	S216274	
15 m	S215519	-	S216297	S216275	
20 m	S215520	-	S216230	S216276	
25 m	S215521	-	-	-	
30 m	S215522	-	S216231	S216277	
40 m	-	-	S216238	S216278	
50 m	-	-	S216239	S216279	
60 m	-	-	S216240	S216280	
70 m	-	-	S216241	S216281	
80 m	-	-	S216242	S216282	
90 m	-	-	S216243	S216283	
100 m	-	-	S216244	S216284	

Length	LC-SC 50/125um OM3	LC-SC 50/125um OM4	LC-ST 50/125um OM2	LC-ST 50/125um OM3	LC-ST 50/125um OM4
0,5 m	S216264	S216777	S216216	-	-
1 m	S216265	S216293	-	S216285	S216289
1,5 m	-	-	-	-	-
2 m	S216245	S216294	S216218	S216286	S216290
3 m	S216246	S216295	S216219	S216287	S216291
5 m	S216266	S216296	-	S216288	S216292
7,5 m	-	-	-	-	-
10 m	S216267	-	-	-	-
15 m	S216263	-	-	-	-

PATCH CABLE 1-FIBER-OPTIC CABLE

- Halogen-free
- UPC
- Simpler cable



Length	LC-LC (APC 8 Degree) 9/125u	LC-SC (APC 8 Degree) 9/125u	SC-SC (APC 8 Degree) 9/125u	SC-LC (APC 8 Degree) 9/125u
0,5 m	S215633	S215640	S215624	S215626
1 m	S215634	S215641	S215619	S215627
1,5 m	S215635	S215642	S215620	S215628
2 m	S215636	S215643	S215621	S215629
3 m	S215637	S215644	S215622	S215630
5 m	S215638	S215645	S215623	S215631

LWL-PATCHPANEL



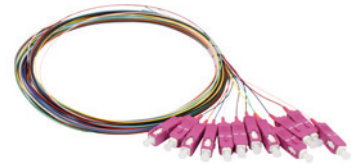
Description	Article
24xLC-Duplex-Sockets, 19"/1HE, without LC couplings, Light grey	S216298
24xLC-Duplex-Sockets, 19"/1HE, without LC couplings, Black	S216299
24xSC-Duplex/LC-Quad-Sockets, 19"/1HE, without SC/LC couplings, Light grey	S216370
24xSC-Duplex/LC-Quad-Sockets, 19"/1HE, without SC/LC couplings, Light grey	S216370V2
Top-hat rail (DIN), 6xSC-Duplex/LC-Quad-Sockets, Without couplings, Light grey	S215688
Top-hat rail (DIN), 12xLC-Duplex/SC-Simplex-Sockets, Without couplings, Light grey	S215687

LWL-PATCHPANEL ACCESSORIES



Description	Article
Splice protection, Heat shrink tubing (Heatshrink), transparent, 40mm, 100-Pack	S215596
Splice protection, Heat shrink tubing (Heatshrink), transparent, 60mm, 100-Pack	S215597
Splice set Crimp (Splice cassette, cover, splice holder)	S215474
Splice set Heat shrink tubing (Spleißkassette, Deckel, Spleiß/Heat shrink tubing)	S215523

LWL-PIGTAIL



Description	Article
LWL-Pigtail-LC 9/125u, 2mtr. OS2, 12-Pack, colored	S215475
LWL-Pigtail-LC 50/125u, 2mtr. OM2, 12-Pack, colored	S215476
LWL-Pigtail-LC 50/125u, 2mtr. OM3, 12-Pack, colored	S215477
LWL-Pigtail-LC 50/125u, 2mtr. OM4, 12-Pack, colored	S215478V2
LWL-Pigtail-LC 50/125u, 2mtr. OM5, 12-Pack, colored	S215510
LWL-Pigtail-LC(APC) 9/125u, 1,5mtr. OS2, 4-Pack, colored	S215598
LWL-Pigtail-LC(APC) 9/125u, 1,5mtr. OS2, 12-Pack, colored	S215594
LWL-Pigtail-LSH(E2000APC) 9/125u, 2mtr. OS2, 12-Pack, colored	S215560

LWL-COUPPLINGS



Description	Article
LC (APC) female/LC (APC) female, 9/125u singlemode, duplex, PVC, ceramic sleeve, with flange	S215592
LC jack/LC socket, 9/125u singlemode, duplex, PVC, ceramic sleeve, with flange	S215426
LC jack/LC socket, 50/125u multimode, duplex, PVC, ceramic sleeve, OM2, with flange	S215421
LC jack/LC socket, 50/125u multimode, duplex, PVC, ceramic sleeve, OM3, with flange	S215423
LC jack/LC socket, 50/125u multimode, duplex, PVC, ceramic sleeve, OM4, with flange	S215424
LC jack/LC socket, 50/125u multimode, duplex, PVC, ceramic sleeve, OM5, with flange	S215508
LC female/LC female, 9/125u singlemode OS2, Blue, Quad, PVC, with flange	S215689
LC jack/LC socket, 50/125u multimode OM3, aqua, quad, PVC, with flange	S215690
LC jack/LC socket, 50/125u multimode OM4, erica purple, quad, PVC, with flange	S215691
LC jack/LC socket, 50/125u multimode, duplex, metal with flange	S215422
LSH (E2000APC) female/LSH (E2000APC) female, 9/125u singlemode, Green, simplex, PVC, ceramic sleeve	S215427
SC (APC) female/SC (APC) female, 9/125u singlemode, duplex, PVC, OS2, ceramic sleeve, with flange	S215561
SC (APC) female/SC (APC) female, 9/125u singlemode, simplex, PVC, ceramic sleeve, with flange	S215593
SC jack/SC socket, 9/125u singlemode, duplex, PVC, OS2, ceramic sleeve, with flange	S215447
SC jack/SC socket, 50/125u multimode, duplex, PVC, OM3, ceramic sleeve, with flange	S215448
SC jack/SC socket, 50/125u multimode, duplex, PVC, OM4, ceramic sleeve, with flange	S215449
Description Accessoires	Article
Mounting set for SC/LC/E2000, 50x screws+nuts	S216315



ALLNET Nordic

World Trade Center
Borupvang 3
2750 Ballerup

www.allnet.dk
info@allnet.dk

Tel.: +45 6996 0000